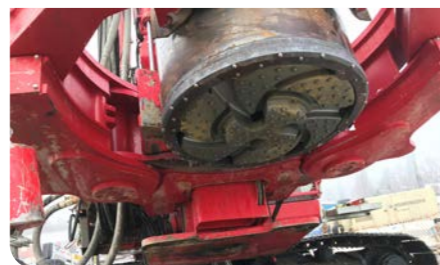
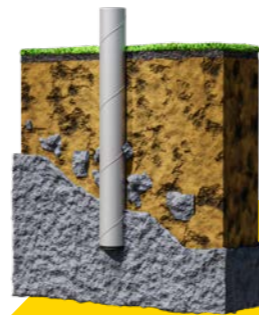
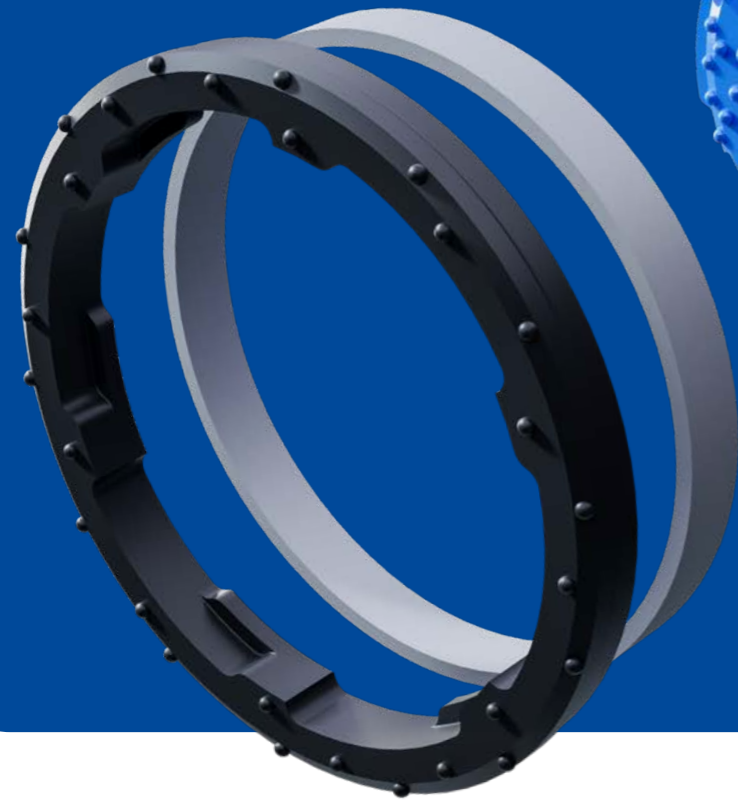


SOLITARY RING BIT SYSTEM



Solitary ring bit system is designed for drilling end-bearing piles through overburden into bedrock. The system can drill straight and inclined piles through boulders and rock layers and it easily manages situations where the bedrock itself is inclined.

The robust ring bit is not attached to casing shoe, which makes it the most budget-friendly option of the ring bit alternatives.

MAIN APPLICATIONS

- End-bearing piles including micro-piling
- Pileings with sacrificed casings, which have no large ID ring bit requirements
- Slope stabilisation
- Pipe walls, king piles, etc.



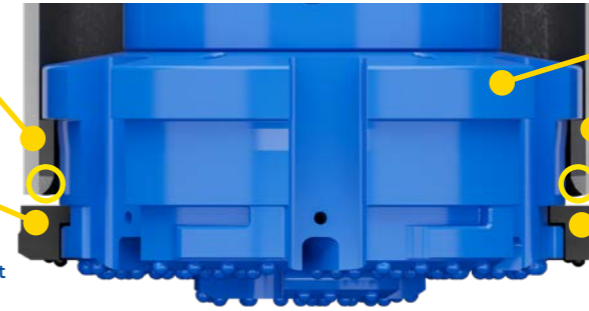
SOLITARY SYSTEM 114–1 524 mm

MODEL 1 CASING SHOE

Casing shoe and ring bit are not integrated

Ring bit protects the pilot gauge buttons

○ = Welding spot



The pilot is compatible with the large integrated and M-Wall systems

Strong shoulders

Ring bit designed for heavy use

MODEL 2 CASING SHOE



System is available for all major shank designs. Sizes 114–178 mm can be ordered with Spiral Flush Mini or conventional flushing. Model 1 casing shoe comes standard. Model 2 can be delivered on special request.



System product code	Casing OD mm	Casing OD inch	Max wall mm	Max wall inch	Ring bit ID mm	Ring bit ID inch	Ring bit OD mm	Ring bit OD inch	Pilot bit OD mm	Pilot bit OD inch	Recommended hammer
S114-8-68	114.3	4.5"	8	0.31"	68	2.68"	125	4.92"	96	3.78"	MP30-DH
S127-10-75	127	5"	10	0.39"	75	2.95"	137	5.39"	105	4.13"	MP30-DH
S140-10-87	139.7	5.5"	10	0.39"	87	3.43"	149	5.87"	119	4.69"	MP4H-MQ
S152-10-96	152.4	6"	10	0.39"	96	3.78"	162	6.38"	130	5.12"	MP4H-MQ
S159-10-103	158.8	6.25"	10	0.39"	103	4.06"	169	6.65"	137	5.39"	MP4H-MQ
S168-12.7-106	168.3	6.63"	12.7	0.5"	106	4.17"	179	7.05"	140	5.51"	MP50-MQ
S178-12.7-116	177.8	7"	12.7	0.5"	116	4.57"	188	7.40"	150	5.91"	MP50-MQ
S194-12.7-125	193.7	7.63"	12.7	0.5"	125	4.92"	205	8.07"	166	6.54"	MP60-MQ
S219-12.7-150	219.1	8.63"	12.7	0.5"	150	5.91"	230	9.06"	190	7.48"	MP70-MC-D160
S244-14.2-170	244.5	9.63"	14.2	0.56"	170	6.69"	257	10.12"	213	8.39"	MP80-MQ
S254-14.2-180	254	10"	14.2	0.56"	180	7.09"	265	10.43"	223	8.78"	MP80-MQ
S273-12.7-192	273	10.75"	12.7	0.5"	192	7.56"	286	11.26"	245	9.65"	MP80-MQ
S301-14.2-220	301.6	11.87"	14.2	0.56"	220	8.66"	312	12.28"	270	10.63"	MP80-MQ
S323-14.2-241	323.9	12.75"	14.2	0.56"	241	9.49"	335	13.19"	291	11.62"	MP100-MC
S339-14.2-255	339.7	13.37"	14.2	0.56"	255	10.04"	350	13.78"	308	12.13"	MP100-MC
S355-14.2-270	355.6	14"	14.2	0.56"	270	10.63"	367	14.45"	324	12.76"	MP100-MC
S406-16-318	406.4	16"	16	0.63"	318	12.52"	418	16.46"	370	14.57"	MP120-MC
S457-16-369	457.2	18"	16	0.63"	369	14.53"	469	18.46"	420	16.54"	MP120-MC
S508-16-422	508	20"	16	0.63"	422	16.61"	520	20.47"	471	18.54"	MP150-MC
S559-16-470	558.8	22"	16	0.63"	470	18.50"	571	22.48"	521	20.51"	MP150-MC
S610-16-502	609.6	24"	16	0.63"	502	19.76"	622	24.49"	572	22.52"	MP180-MQ
S660-16-545	660.4	26"	16	0.63"	545	21.46"	675	26.57"	615	24.21"	MP180-MQ
S711-16-610	711.2	28"	16	0.63"	610	24.02"	735	28.94"	675	26.76"	MP240-MQ
S762-20-655	762	30"	20	0.79"	655	25.79"	785	30.91"	715	28.15"	MP240-MQ
S813-20-700	812.8	32"	20	0.79"	700	27.56"	830	32.68"	766	30.16"	MP240-MQ
S863-20-750	863.6	34"	20	0.79"	750	29.53"	880	34.65"	815	32.09"	MP240-MQ
S914-20-800	914.4	36"	20	0.79"	800	31.50"	930	36.61"	866	34.21"	MP240-MQ
S1016-20-880	1 016	40"	20	0.79"	880	34.65"	1 032	40.63"	966	38.09"	MP340
S1067-20-931	1 066.8	42"	20	0.79"	931	36.65"	1 086	42.76"	1 014	39.92"	MP340
S1219-22-1080*	1 219.2	48"	22	0.87"	1 080	42.52"	1 240	48.82"	1 164	45.83"	MP340
S1321-25.4-1150*	1 320.8	52"	25.4	1"	1 150	45.28"	1 344	52.91"	1 247	49.09"	MP400
S1422-25.4-1250*	1 422.4	56"	25.4	1"	1 250	49.21"	1 446	56.93"	1 348	53.07"	MP400
S1524-25.4-1340*	1 524	60"	25.4	1"	1 340	52.76"	1 548	60.94"	1 462	57.56"	MP400

*Large-diameter systems can be engineered based on the specific customer requirements.

The solitary double-shoulder pilot is not compatible with the small integrated single-shoulder ring bits.