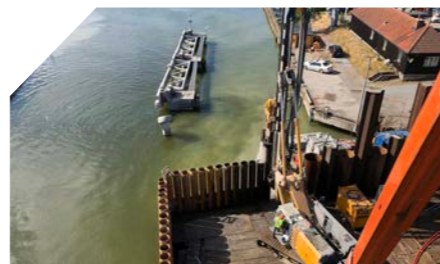


INTEGRATED M-WALL RING BIT SYSTEM



Integrated M-Wall ring bit system is used to drill straight interlocked casings through boulders and rock layers even into inclined bedrock. M-Wall is a perfect solution to replace sheet piles and slurry walls in rocky ground conditions.

The integrated design means that the casing shoe and the ring bit are permanently connected together. This makes drilling over water safe as there is no risk of accidentally dropping the ring bit into water.



MAIN APPLICATIONS

- Interlocked walls and roofs
- Cofferdams
- Retaining walls
- Watertight cut off walls



INTEGRATED M-WALL RING BIT SYSTEM 219-1 219 mm



○ = Welding spot

System is available for all major shank designs.

SPIRALFLUSH®

| System product code | Casing OD mm | inch | Max wall mm | inch | Ring bit ID mm | inch | Ring bit OD mm | inch | Pilot bit OD mm | inch | Recommended hammer |
|---------------------|--------------|--------|-------------|-------|----------------|--------|----------------|--------|-----------------|--------|--------------------|
| XLI219-12.7-150 | 219.1 | 8.63" | 12.7 | 0.5" | 150 | 5.91" | 277 | 10.91" | 191 | 7.52" | MP70-MC-D160 |
| XLI244-14.2-170 | 244.5 | 9.63" | 14.2 | 0.56" | 170 | 6.69" | 302 | 11.89" | 213 | 8.37" | MP80-MQ |
| XLI254-14.2-178 | 254 | 10" | 14.2 | 0.56" | 178 | 7.01" | 312 | 12.28" | 223 | 8.78" | MP80-MQ |
| XLI273-12.7-192 | 273 | 10.75" | 12.7 | 0.5" | 192 | 7.56" | 331 | 13.03" | 245 | 9.65" | MP80-MQ |
| XLI301-14.2-220 | 301.6 | 11.87" | 14.2 | 0.56" | 220 | 8.66" | 355 | 13.98" | 270 | 10.63" | MP80-MQ |
| XLI323-14.2-240 | 323.9 | 12.75" | 14.2 | 0.56" | 240 | 9.45" | 378 | 14.88" | 291 | 11.62" | MP100-MC |
| XLI339-14.2-255 | 339.7 | 13.37" | 14.2 | 0.56" | 255 | 10.04" | 393 | 15.47" | 308 | 12.13" | MP100-MC |
| XLI355-14.2-270 | 355.6 | 14" | 14.2 | 0.56" | 270 | 10.63" | 409 | 16.10" | 324 | 12.76" | MP100-MC |
| XLI406-16-318 | 406.4 | 16" | 16 | 0.63" | 318 | 12.52" | 460 | 18.11" | 370 | 14.57" | MP120-MC |
| XLI457-16-360 | 457.2 | 18" | 16 | 0.63" | 369 | 14.53" | 511 | 20.12" | 420 | 16.54" | MP120-MC |
| XLI508-16-422 | 508 | 20" | 16 | 0.63" | 422 | 16.61" | 562 | 22.13" | 471 | 18.54" | MP150-MC |
| XLI559-16-470 | 558.8 | 22" | 16 | 0.63" | 470 | 18.50" | 613 | 24.13" | 521 | 20.51" | MP150-MC |
| XLI610-16-502 | 609.6 | 24" | 16 | 0.63" | 502 | 19.76" | 664 | 26.14" | 572 | 22.52" | MP180-MQ |
| XLI660-16-545 | 660.4 | 26" | 16 | 0.63" | 545 | 21.46" | 714 | 28.11" | 615 | 24.21" | MP180-MQ |
| XLI711-16-610 | 711.2 | 28" | 16 | 0.63" | 610 | 24.02" | 765 | 30.12" | 675 | 26.76" | MP240-MQ |
| XLI762-20-655 | 762 | 30" | 20 | 0.79" | 655 | 25.79" | 816 | 32.13" | 715 | 28.15" | MP240-MQ |
| XLI813-20-700 | 812.8 | 32" | 20 | 0.79" | 700 | 27.56" | 867 | 34.13" | 766 | 30.16" | MP240-MQ |
| XLI863-20-750 | 863.6 | 34" | 20 | 0.79" | 750 | 29.53" | 917 | 36.10" | 815 | 32.09" | MP240-MQ |
| XLI914-20-800 | 914.4 | 36" | 20 | 0.79" | 800 | 31.50" | 968 | 38.11" | 866 | 34.09" | MP240-MQ |
| XLI1016-20-880* | 1 016 | 40" | 20 | 0.79" | 880 | 34.65" | 1 070 | 42.13" | 966 | 38.09" | MP340 |
| XLI1067-20-931* | 1 066.8 | 42" | 20 | 0.79" | 931 | 36.65" | 1 121 | 44.13" | 1 014 | 39.92" | MP340 |
| XLI1219-22-1080* | 1 219.2 | 48" | 22 | 0.87" | 1 080 | 42.52" | 1 273 | 50.12" | 1 164 | 45.83" | MP340 |

*Large-diameter systems can be engineered based on the specific customer requirements.